

pursuant to section 24.021 of the Texas Local Government Code. Candidates for the offices of Mayor and the two City Commissioners must submit candidacy applications in the Office of the County Judge on or before 5:00 p.m. on February 14, 2025.

IT IS FURTHER ORDERED that the following individuals will be appointed to serve as election judges and election clerks to conduct the incorporation election:


Christina Diaz Presiding Election Judge

Lea Lumpkins Election Judge

Yvonne Duenez Election Clerk

Marcella Manning Election Clerk

IT IS FURTHER ORDERED that Notice of said incorporation election will be published in the newspaper, Victoria Advocate, before the 30th day before May 3, 2025, the day of the election.


The Honorable Ben Zeller
Victoria County Judge

9-20-24

Victoria CAD Web Map

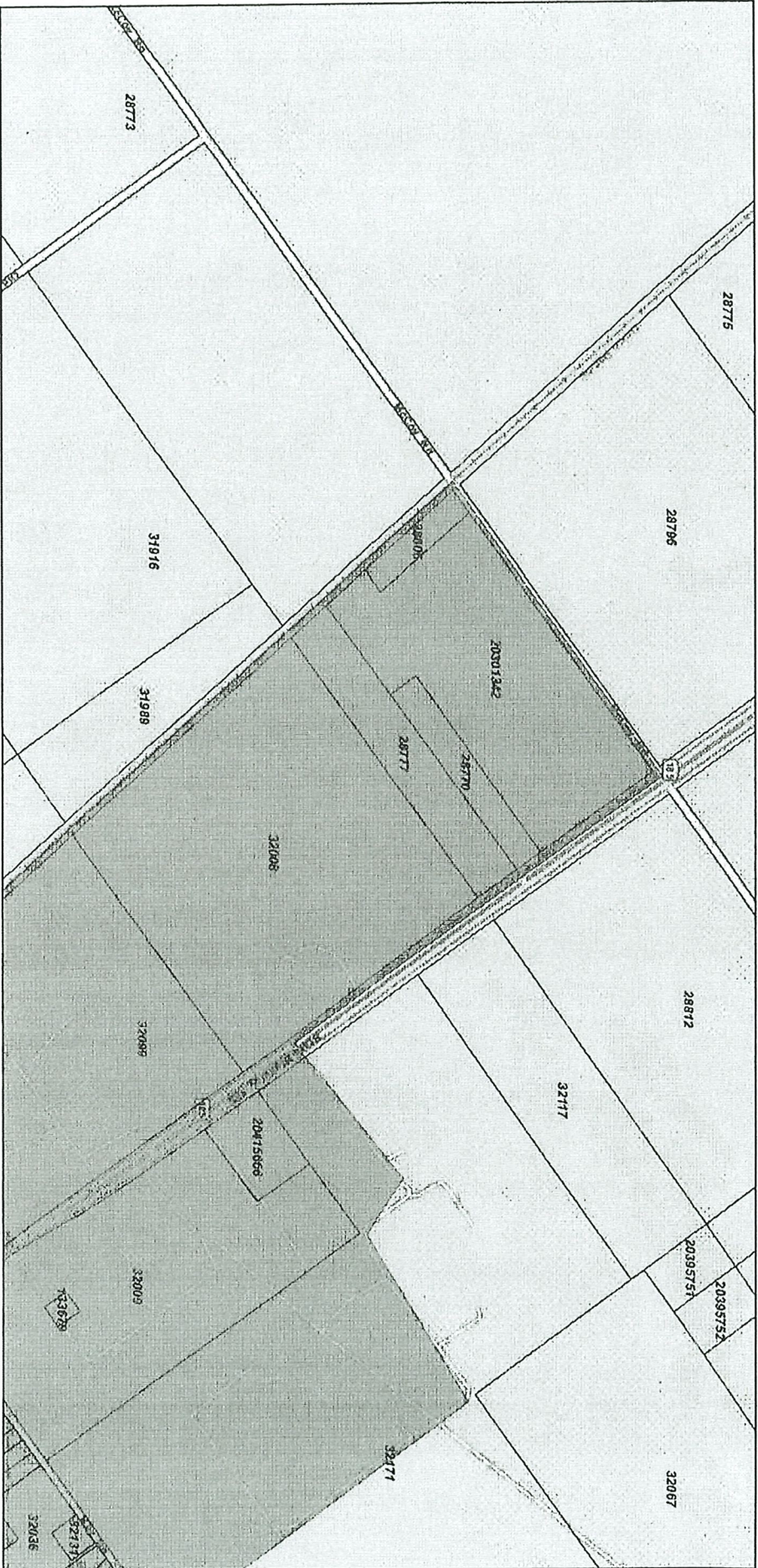
Ex. A



TIGERwebGeography Division

<i>Geographic Identifier</i>	4808800
<i>Name</i>	Bloomington CDP
<i>State FIPS Code</i>	48
<i>Place FIPS Code</i>	08800
<i>Place NS Code</i>	02407864
<i>Urban/Rural Flag</i>	R
<i>Base Name</i>	Bloomington
<i>Legal/Statistical Area Description Code</i>	57
<i>MTFCC</i>	G4210
<i>Place Class Code</i>	U1
<i>Functional Status</i>	S
<i>Decennial Population Count</i>	2082
<i>Decennial Housing Count</i>	903
<i>Centroid Latitude</i>	+28.6504186
<i>Centroid Longitude</i>	-096.9021950
<i>Internal Point Latitude</i>	+28.6504186
<i>Internal Point Longitude</i>	-096.9021950
<i>Land Area (Square Meters)</i>	6862675
<i>Water Area (Square Meters)</i>	0
<i>Metro/Micro Principal City Indicator</i>	N
<i>NECTA Principal City Indicator</i>	N
<i>MAF/TIGER OID</i>	28090381294393

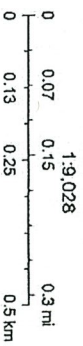
Victoria CAD Web Map



8/27/2024, 9:22:39 AM

bloomington.cdp_polygons

Parcels



Esri, HERE, Garmin, INCREMENT P, Intermap, NSA, USGS

Victoria County Appraisal District, BIS Consulting - Disclaimer: This product is for informational purposes only and has not been prepared for or be suitable for legal, engineering, or surveying purposes. It does not represent an on-the-ground survey and represents only the approximate relative location of boundaries.